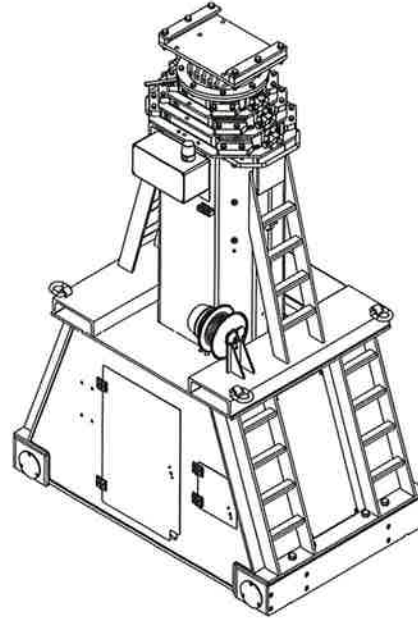
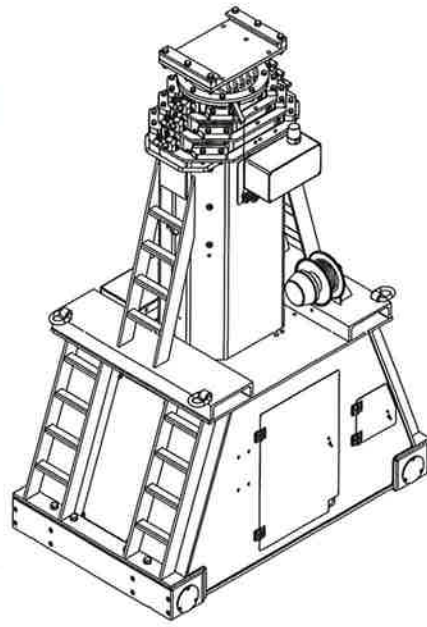


**Capacity:**

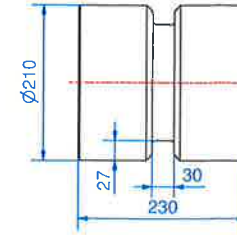
- Stage 1: 130 metric tonnes (143 short tonnes)
- Stage 2: 130 metric tonnes (143 short tonnes)
- Stage 3: 75 metric tonnes (82 short tonnes)

**Self weight:**

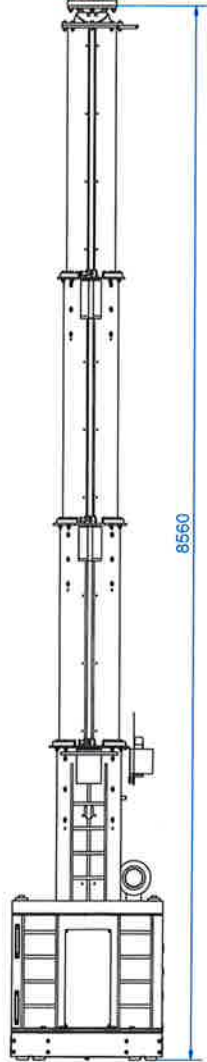
appr. 6500 kg (14330 lbs)



**Wheel Dimensions (1 : 5)**



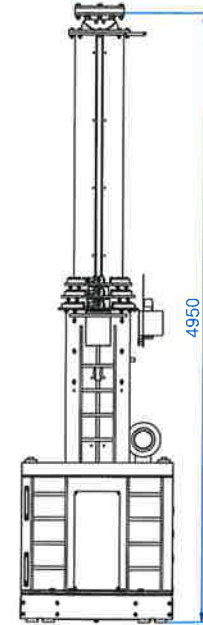
**Stage 3**  
Capacity: 75 metric tonnes (each unit)



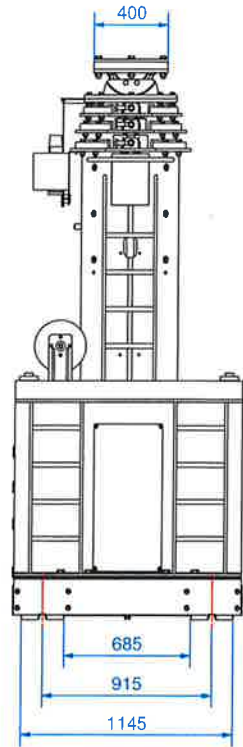
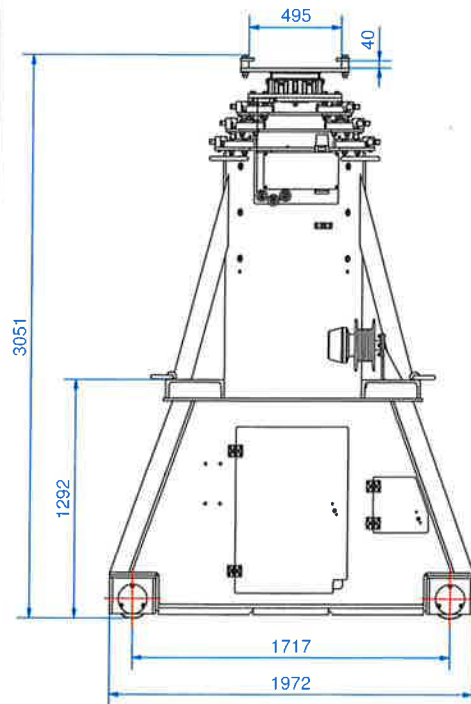
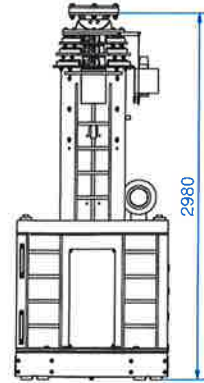
**Stage 2**  
Capacity: 130 metric tonnes (each unit)



**Stage 1**  
Capacity: 130 metric tonnes (each unit)



**Stage 0**

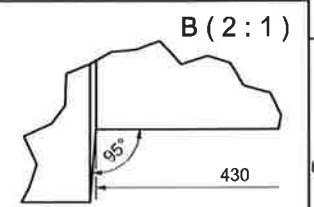
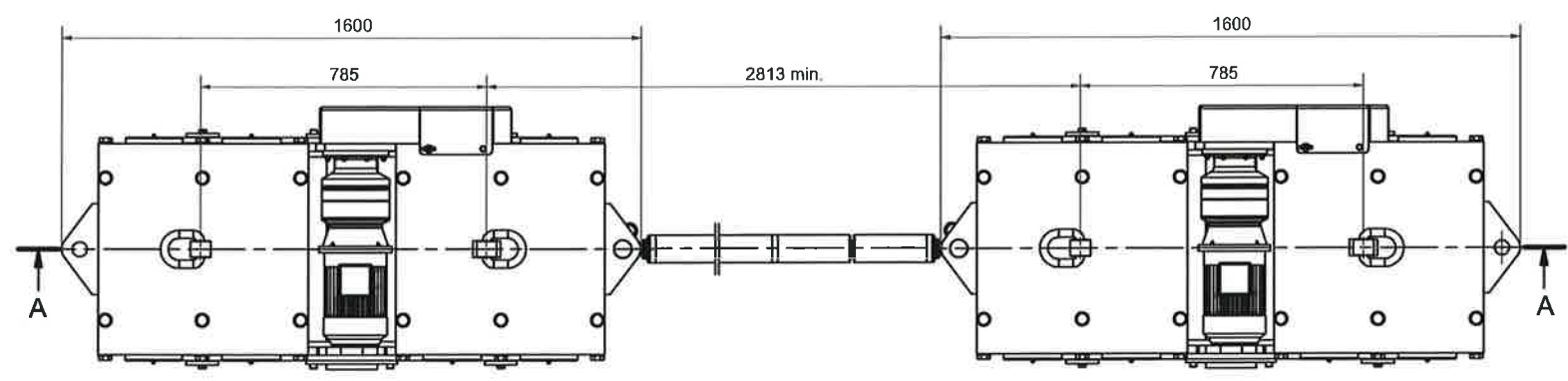


DESIGN: SBL500-MK1	REVISIONS: 1	DATE: 17-10-2011	REVISIONS: 1	SCALE: 1:1	DATE: 17-10-2011
DESIGNER: S. B. B. B.	CHECKED: S. B. B. B.	APPROVED: S. B. B. B.	DATE: 17-10-2011	SCALE: 1:1	DATE: 17-10-2011
<b>ENERPAC</b>			<b>SBL500 - MK1</b>		
02520.01.00.00			02520.01.00.00		

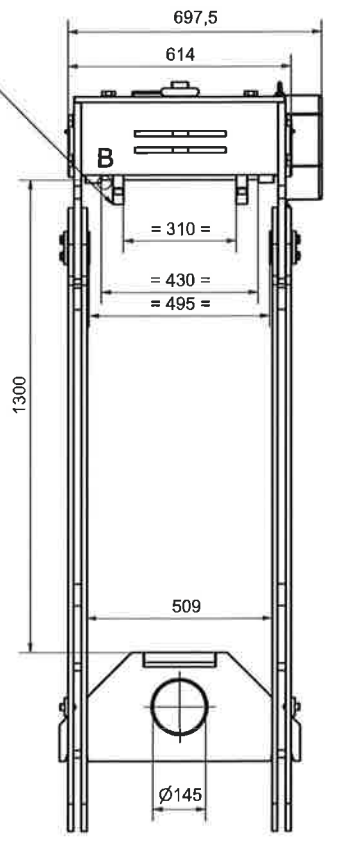
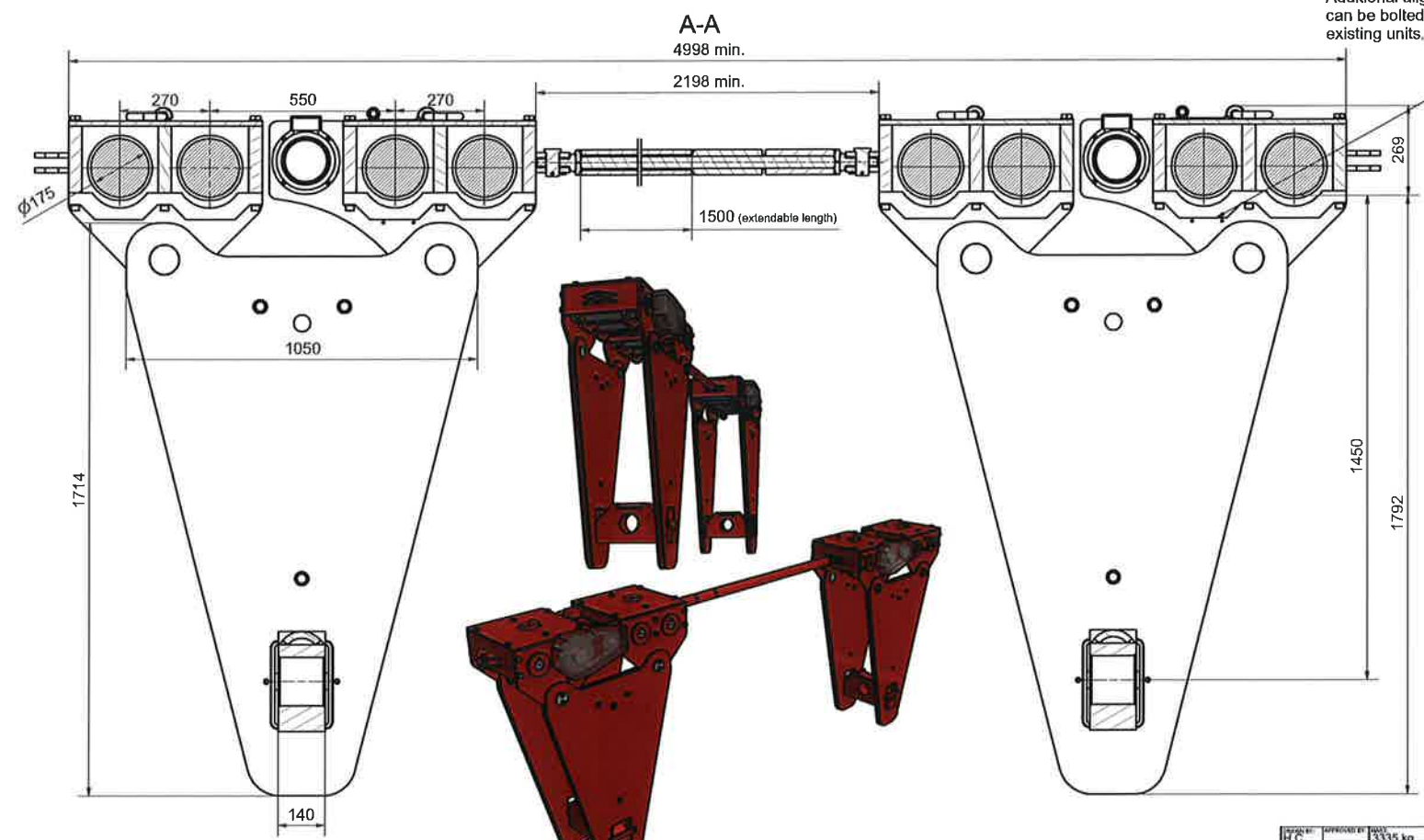
Capacity:  
150 Te (metric) per Anchor

Total weight:  
appr. 3335 kg (per set as drawn)

Max. travelling speed:  
appr. 900 mm/min @ 1450 RPM (50 Hz)

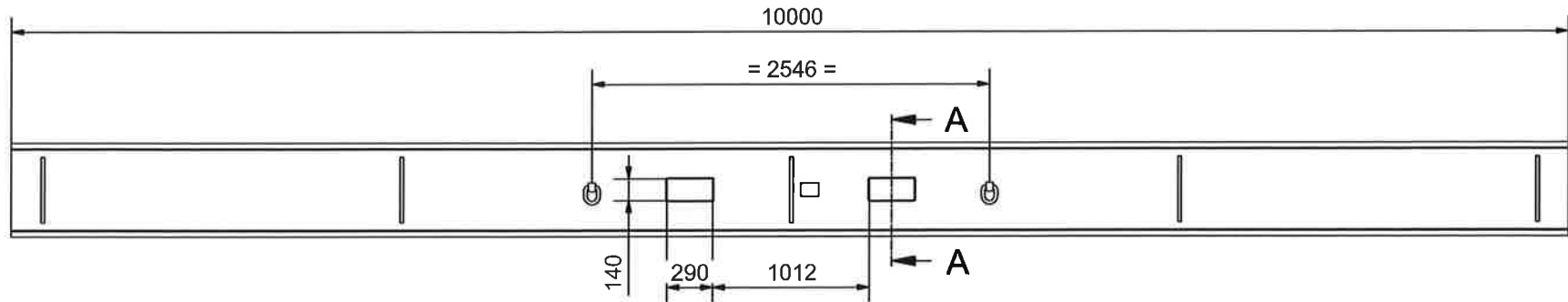
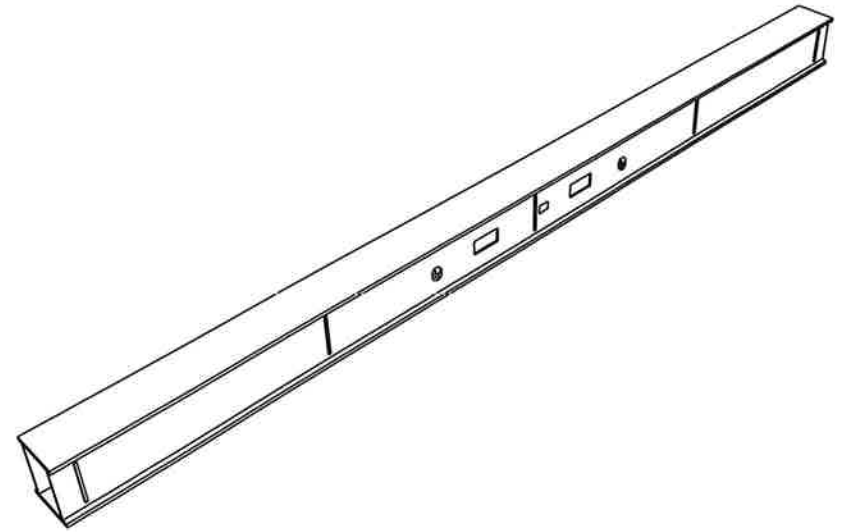
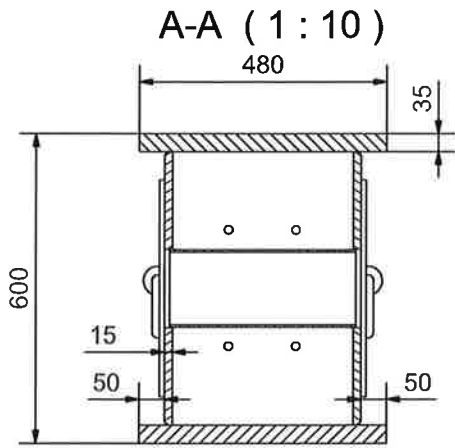


Additional alignment strips (HE-beams),  
can be bolted underneath  
existing units.



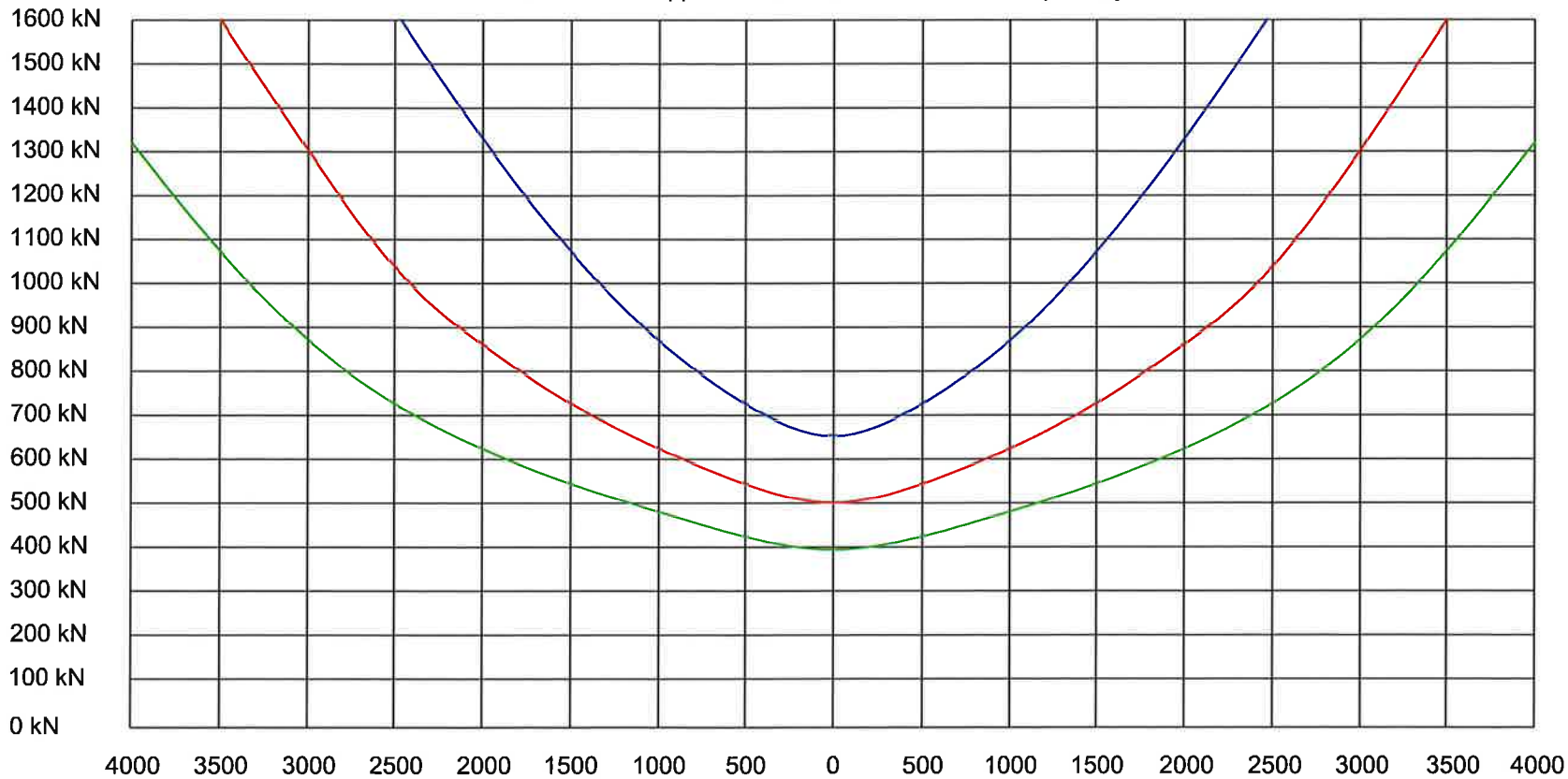
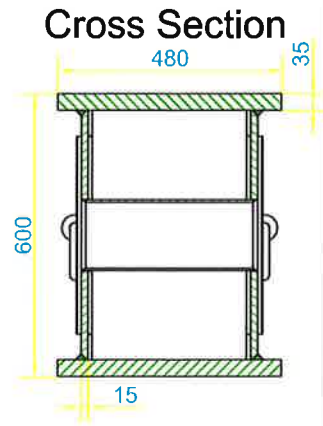
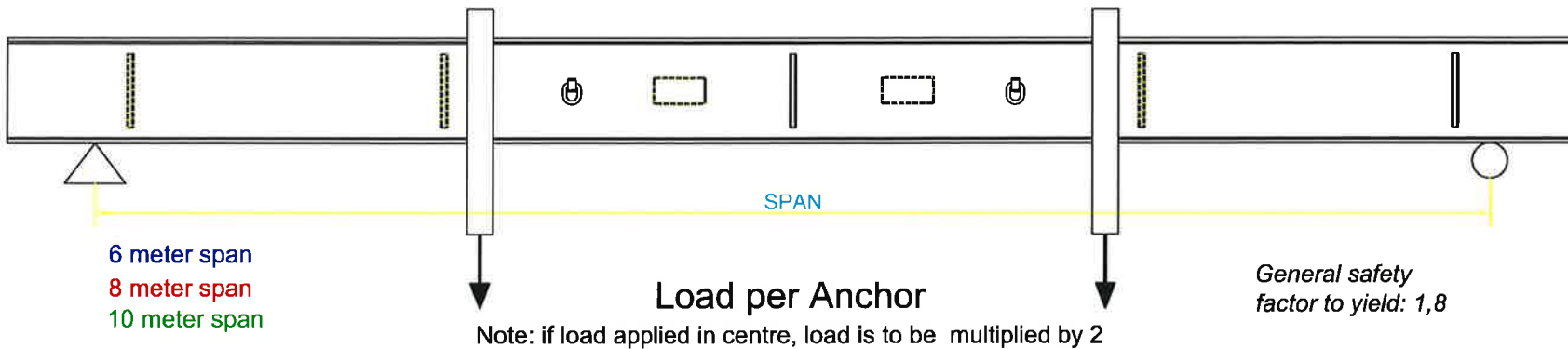
Capacity: 1500 kN (per anchor)

DESIGNED BY: H.C.	APPROVED BY: H.C.	DATE: 13-11-08	REVISIONS:	REVISION NUMBER:	TOLERANCE UNLESS OTHERWISE SPECIFIED:
SCALE: 1:10	WEIGHT: 3335 kg				ANGLE: AS SHOWN
OPASSTYÖKÄÄNTÄMÄ: TÄMÄ TUOTE SUOJELLUUS SUOJELUKSIA TUOTEKÄÄNTÄMÄ: TÄMÄ TUOTE SUOJELLUUS SUOJELUKSIA TUOTEKÄÄNTÄMÄ: TÄMÄ TUOTE SUOJELLUUS SUOJELUKSIA TUOTEKÄÄNTÄMÄ: TÄMÄ TUOTE SUOJELLUUS SUOJELUKSIA			TUOTEKÄÄNTÄMÄ: TÄMÄ TUOTE SUOJELLUUS SUOJELUKSIA TUOTEKÄÄNTÄMÄ: TÄMÄ TUOTE SUOJELLUUS SUOJELUKSIA TUOTEKÄÄNTÄMÄ: TÄMÄ TUOTE SUOJELLUUS SUOJELUKSIA TUOTEKÄÄNTÄMÄ: TÄMÄ TUOTE SUOJELLUUS SUOJELUKSIA		
<b>ENERPAC</b>			Beam Skidding Unit 150 Te (each)		
03141.01.00.00			A2		



Capacity as per loadchart

DRAWN BY: <b>C.K.</b>	APPROVED BY:	MASS: <b>4100 kg</b>	MATERIAL CERTIFICATE:	DATE: 14-2-2007	REMOVE BURR OF INTERSECTING HOLES. BREAK SHARP EDGES 0.1-0.3x45°	TOLERANCE UNLESS OTHERWISE STATED: ANGLE: ±0.5° LINEAR: ±0.5
CHECKED BY:	SCALE: 1:30	MATERIAL:	OVERALL: 32		PART NAME: <b>Header Beam 10m</b>	
DIPALSTRAAT 48, 7554 TB HENGELO HOLLAND PO BOX 421, 7550 AK HENGELO HOLLAND TELEPHONE: (+31) 74 2422045 FACSIMILE: (+31) 74 2430238			DRAWN BY: <b>ENERPAC</b>		DRAW NO: <b>02940.01.00.00</b>	
© COPYRIGHTS RESERVED					REV.:	FORM: <b>A3</b>

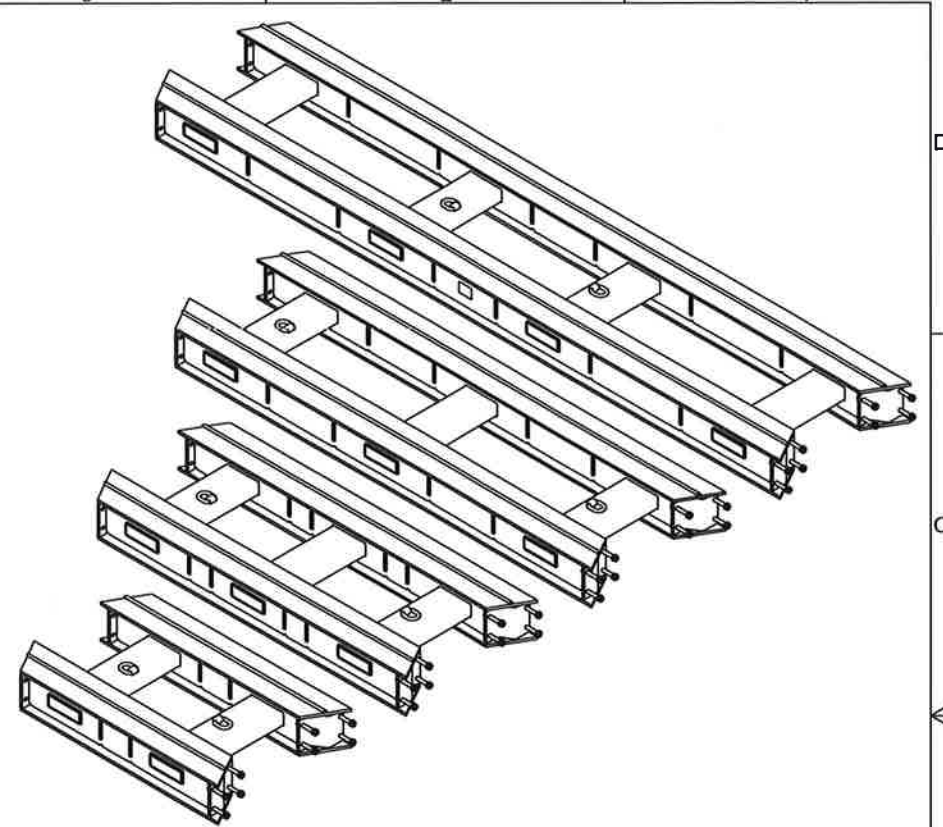
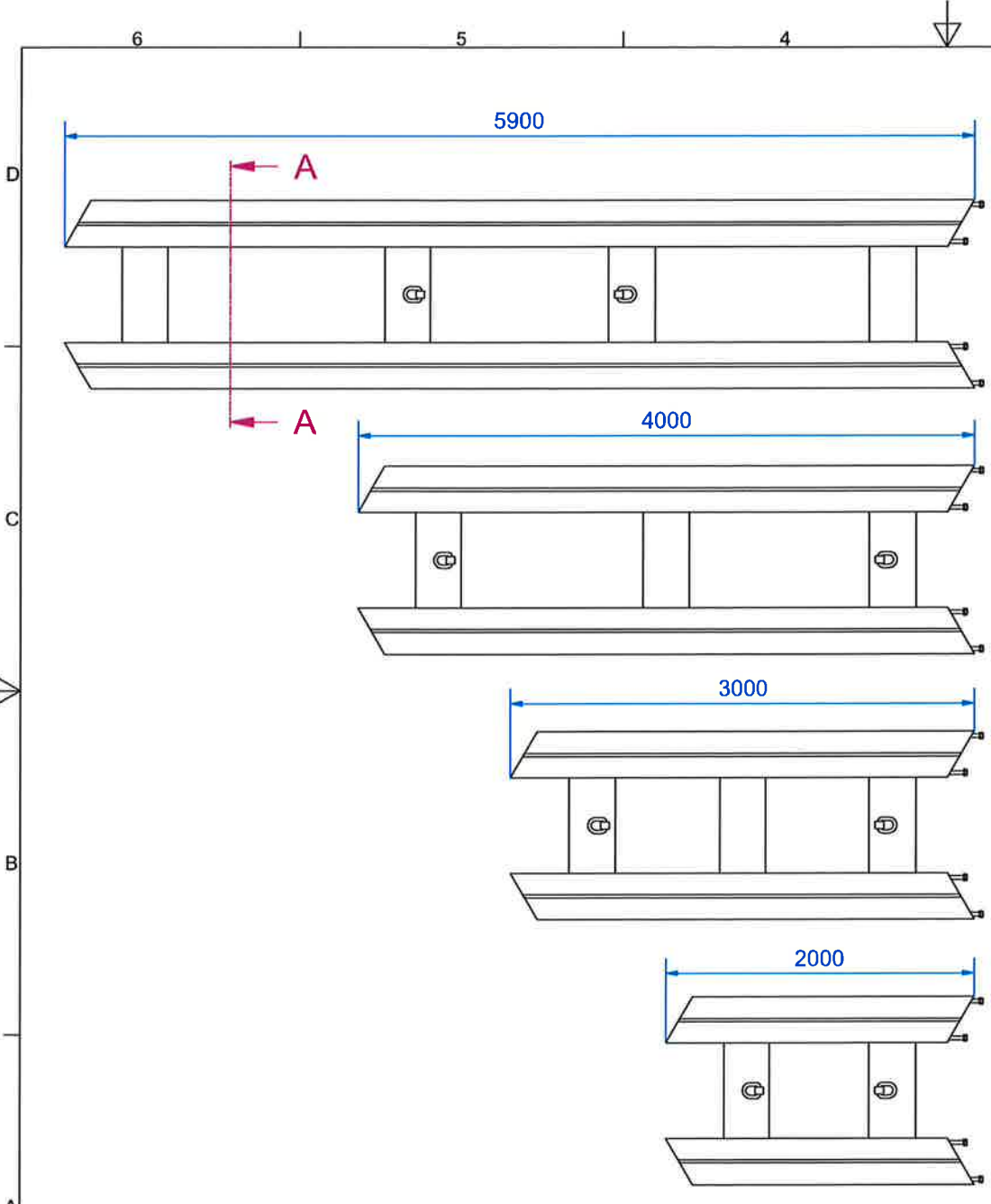


General safety factor to yield: 1,8

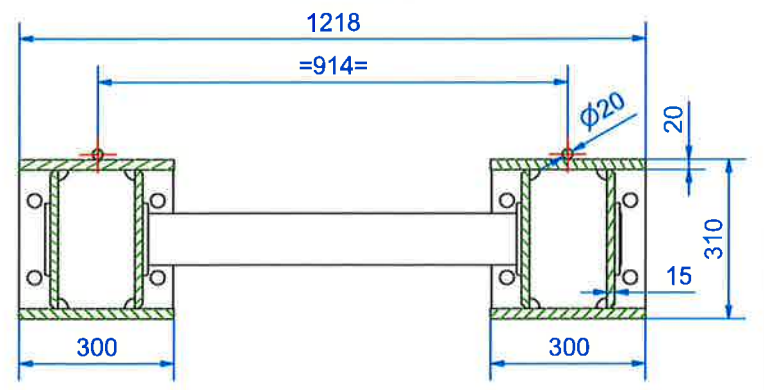
Used material:  
**S355J2+H**

Drawing no:  
02843.01.00.00  
02939.01.00.00  
02940.01.00.00





A-A (1:10)



Mass 5,9m Skid Track : 2135 kg  
 Mass 4m Skid Track : 1460 kg  
 Mass 3m Skid Track : 1207 kg  
 Mass 2m Skid Track : 776 kg

Dimensional tolerances according ISO 2768  
 Fit tolerances according ISO 226  
 Cutting tolerances according ISO 8013  
 Geometric tolerances according DIN 9133  
 Shape tolerances according ISO 1101, class B

DRAWN BY: <b>GE</b>	APPROVED BY:	MASS:	MATERIAL:	DATE: 27-7-2011	REMOVE BURRS OF INTERSECTING HOLES. BREAK SHARP EDGES 0.1-0.3x45°	TOLERANCE UNLESS OTHERWISE STATED: ANGLE: 45° LINEAR: 40 μm
CHECKED BY:	SCALE: 1:30	MATERIAL:	ADDRESS: DPFAALSTRAAT 44, 7554 TB HENGELO HOLLAND TELEPHONE: (+31) 74 2422045 FACSIMILE: (+31) 74 2430338	PART NAME: <b>Skid Track SBL Series</b>	RAV: 0	FORM: <b>A3</b>
ENERPAC	DRAW NO.: 03134.01.00.00	COPYRIGHTS RESERVED	©	2	1	3